



CPX, CLX, CBX

Vacuum Contactors

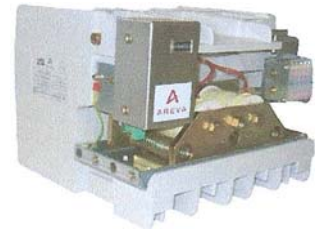
As a supplier of MV installations to industries, your goal is to fit your equipment with the most reliable components from a supplier that you can trust. AREVA T&D's proven range of vacuum contactors offers the best solution to suit MV feeders for industrial projects.

The design and contact materials fulfill the general requirements for contactor applications of motor starters, transformers or capacitor bank feeders (including back-to-back installations) in different industrial sectors such as:

- > Process industries
- > Mining
- > Oil & Gas
- > Power generation

and in utilities applications including:

- > Power factor correction
- > Public lighting
- > Transformer neutral earthing



Our range of dependable contactors incorporating AREVA T&D's vacuum switches is available in a large variety of configurations:

- > CPX: our most compact design for 3.6 kV applications
- > CLX: for motor starters up to 7.2 kV, offering front access to terminals with its slim line.
- > CBX: a cubic arrangement for 7.2 kV & 12 kV applications
 - Single-phase or three-phase
 - Mechanical interlock between two contactors for motor reverse command.

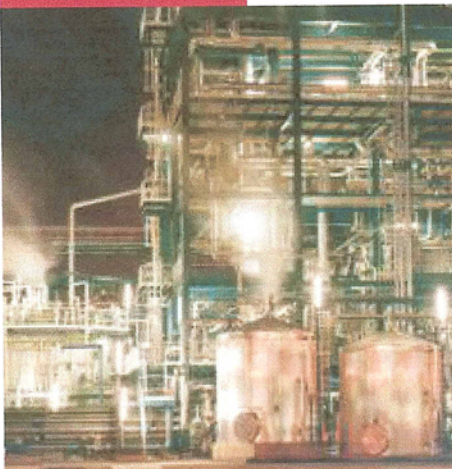
A withdrawable type of CBX for motor starter cubicle equipped with fuse holders (DIN or BS standard) - CVX type - is also available.

CLX, CBX and CVX come with an electronic auxiliary supply (EAS) as standard equipment for easy configuration and low consumption.

AREVA T&D's vacuum contactors have been designed to meet or exceed the requirements of international standards: IEC 60470 – ANSI C37 – BS EN 60470 - NEMA ICS.

Customer Benefits

- Fast switching rate
- Long mechanical life
- Selection of 3 compact arrangements
- Low power losses thanks to electronic auxiliary supply



ELECTRONIC AUXILIARY SUPPLY (EAS)

A selection of only two standard electronic circuits are required to manage all usual auxiliary voltages:

- 24 to 60 VDC
- 110 to 250 VAC/VDC

- > Low power consumption
- > Improved reliability
- > Operation counter (optional)
- > Optional 100 ms delay to open
- > Reduced thermal dissipation
- > Standardized schematics

Design, stock control and contract management made easy for Original Equipment Manufacturers, contractors and industrial end-users!

OPTIONS	CPX	CLX	CBX
Auxiliary contacts	3NO+4NC	5NO+5NC	5NO+5NC
Electronic supply (EAS)	--	Yes	Yes
Opening delay 100 ms	--	Option	Option
Operation counter	--	Option	Option
Insulation level at 42 kV	--	--	Option
Mechanical latch	Option	Option	Option
OVERALL DIMENSIONS in mm			
Width	282	412	343
Depth	193	218	333 *
Height	210	380	258 **
Weight in kg	11	21	28

* 420 mm with mechanical latch

** 300 mm without EAS



CPX



CLX



CBX

TECHNICAL CHARACTERISTICS	Unit	CPX2	CPX2-C	CLX3	CBX3	CBX3-C	CBXS3-C
Rated Voltage	kV	3.6		7.2	7.2 / 12		
Power frequency withstand voltage	kV	10		20	20 / 28		
Impulse withstand voltage (BIL)	kV	40		60	60 / 75		
Inductive load							
Rated thermal current	A	400	400	400	400	400	400
AC3 duty	A	450	450	400	400	400	--
AC4 duty	A	400	315	315	315	315	--
Maximum motor rating *	kW	1900	1500	3900	5300	5300	--
Inrush current	kAp	15	12.5	10	10	10	12.5
Capacitive load							
Rated operating current	A	--	200	--	400	400	--
Maximum capacitor bank rating	kVAr	--	1200	--	3360/5600	3360/5600	--
Inrush current	kAp	--	15	--	20	20	--
Short time withstand current							
1 s	kA	6	5	6	4	4	4
30 s	kA	2.4	1.9	2.4	1.9	1.9	1.9
peak on 1/2 cycle	kAp	15	12.5	15 40	25	25	12.5
Average chopping current	A	0.5	2.3	0.5	2.3	2.3	2.3
Opening time	ms	40 to 80		60 to 110		100 to 170	
Closing time	ms	40 to 80		20 to 90		40 to 90	
Mechanical endurance	N°	1 million			3 millions		
Electrical endurance at rated current	N°	250 000			500 000		
Temperature range	°C	-5 to +40					

* DIN fuses for motor application type FD3M available on request.

RANGE OF VACUUM CONTACTORS			
Rated voltage in kV	3.6	7.2	12
Inductive load	CPX2	CLX3 or CBX3	CBX3-C
Capacitive load	CPX2-C	CBX3-C	CBX3-C
Single phase	CBXS3-C	CBXS3-C	CBXS3-C

CONTROL					
Closing coil supply voltage	V	DC : 24, 48, 60, 110, 125, 220, 250 AC : 110, 120, 220, 240			
Latch supply voltage	V	DC : 24, 48, 110, 240 AC : 110, 240			
		CPX	CLX	CBX	CBXS
Power consumption					
Closing	W	180	500	500	80
Magnetic holding	W	90	100	150	80
Magnetic holding with EAS	W		80	80	80
Latch voltage supply					
Power consumption	W	240	240	240	240
Endurance	N°	200000	200000	200000	200000